



Sanquin

# PeliSPOTä

## human IL-13

### Specification sheet

<b>Order number</b>	M9413
<b>Specificity</b>	The monoclonal antibodies of this pair recognize native and recombinant human IL-13
<b>Intended use</b>	<b>For research use only</b>
<b>Application</b>	Interleukin 13 (IL-13) is an immunoregulatory protein produced by activated T-cells. IL-13 is critical for the development of allergic asthma and is involved in the activation of eosinophils within the airways IL-13 exerts its activity on target cells via the dimeric IL-13 receptor (IL-13R), which comprises the IL-13 receptor alpha1-chain or the high-affinity binding alpha2-chain as a specific component. Overexpression of IL-13R alpha2-chain was found in several types of cancer, like breast cancer, malignant gliomas and Reed-Sternberg cells of Hodgkin's Lymphoma. Human IL-13 shares many of its biological activities with the TH2 cytokine Interleukin 4; both cytokines are able to enhance expression of CD23 on monocytes and B-cells and also induce IgE production. Production of many LPS-induced monokines, such as IL-1α, IL-1β, IL-6, IL-8, IL-10, TNFα, IFNα, MIP-1α, GM-CSF and G-CSF are inhibited by IL-13, whereas IL-1ra is upregulated. These properties are shared with IL-4 and IL-10. Therefore IL-4 and IL-13 can be considered as anti-inflammatory molecules.  This PeliSPOT™ human IL-13 pair has been developed for reproducible and specific enumeration of human IL-13 secreting cells.
<b>Assay procedure</b>	See PeliSPOT™ product information <b>Dilute Streptavidin poly-HRP 1:4000</b> (different from other Elispot assays)
<b>Storage and stability</b>	As indicated on the box label
<b>Cell incubation</b>	Optimal conditions should be determined by the researcher. A typical incubation period is 18-24 hours.
<b>Positive secretion control</b>	Polyclonal cell activation with PHA (1 µg/ml) is recommended.
<b>Spot counting</b>	Enumeration of spots is preferably done with the A.EL.VIS spot analysers, Eli.Scan or Eli.Expert.

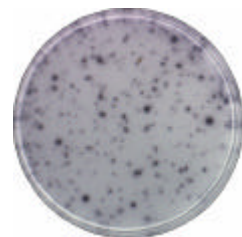
Recommended parameter settings for software version V3.3 and up:

ROI	= 70%	Invert	= off
Brightness	= 65%	Slope	= L
MinSize	= 4	Development	= N
MaxSize	= 500	Separation	= 50
Minintensity	= 9	Pollution	= On
MinCircularity	= 100	Overdevelop	= On

Typical results after 20 hours incubation



50,000 PBMC per well, non-stimulated



50,000 PBMC per well, PHA stimulated

Reagents  
Plesmanlaan 125  
1066 CX Amsterdam  
The Netherlands  
Phone: +31 20 512 3599  
Fax: +31 20 512 3570  
E-mail: [reagents@sanquin.nl](mailto:reagents@sanquin.nl)  
Website: [www.sanquinreagent.nl](http://www.sanquinreagent.nl)

Research Use Only!

M9413 0802050819